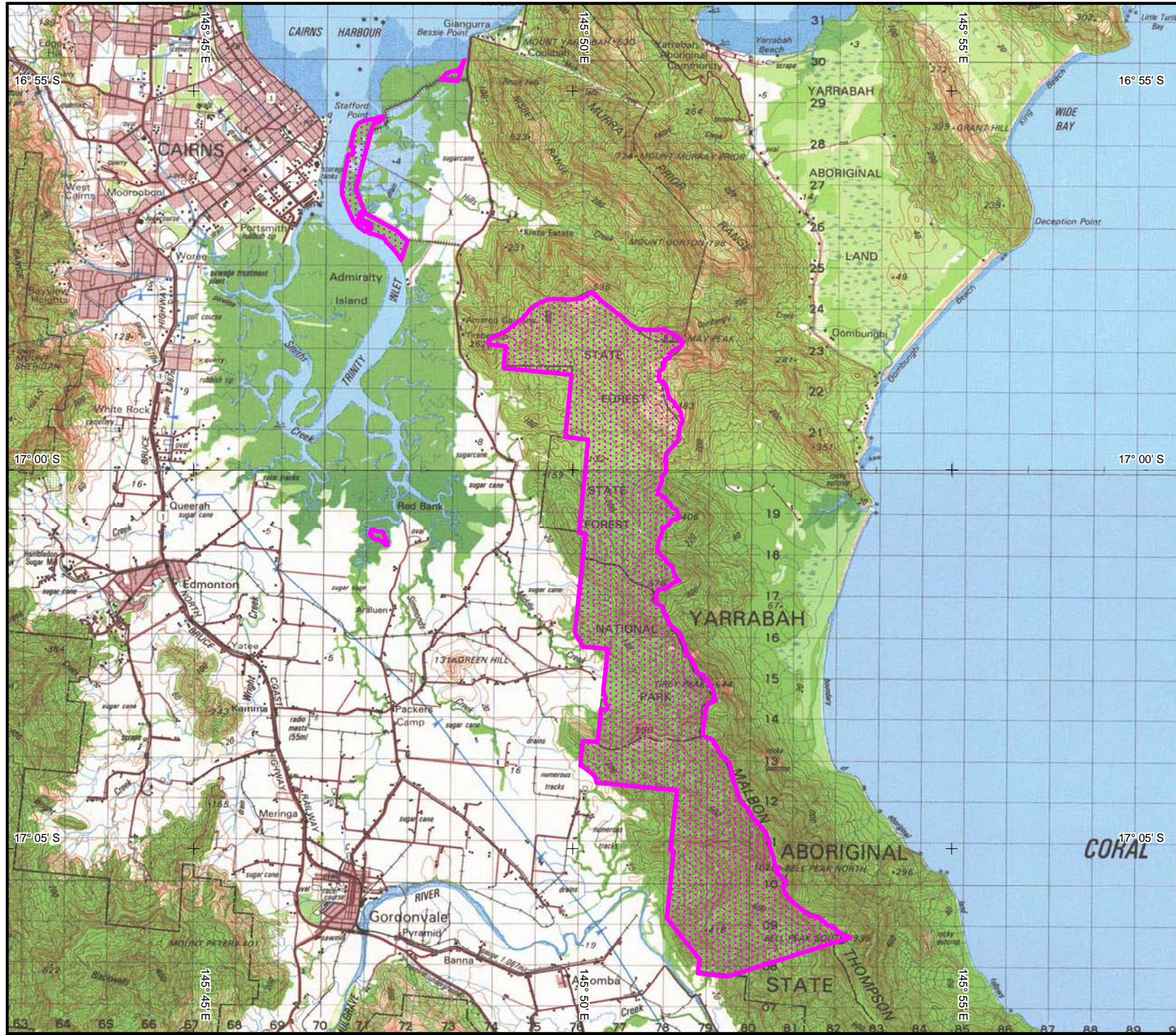


INDIGENOUS LAND USE AGREEMENT: Mandingalbay Yidinji People and Ergon Energy Corporation Limited ILUA (QI2004/025)



QI2004/025
 Mandingalbay Yidinji People and Ergon Energy Corporation Limited

Extent of registered agreement as per the Register of Indigenous Land Use Agreements.

For more information, refer to the Tribunal web site www.nntt.gov.au

Map created by: Geospatial Services, National Native Title Tribunal (26/07/2006).

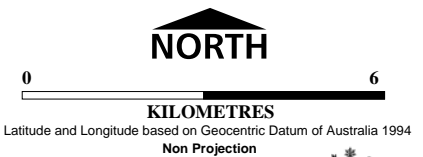
Topographic image data is © Commonwealth of Australia and is used under licence from Geoscience Australia.

NOTE: Topographic images should be used as a guide only.

Agreement boundary data compiled by NNTT based on spatial reference data supplied by various providers.

P:\GEO_INFO\Products\QLD\VLUA\2004\QI2004_025 Mandingalbay Yidinji People & Ergon Energy\ Mapping\2006_1162_A4L\QI2004_025_A4L.wor

The Registrar, the National Native Title Tribunal and its staff and officers and the Commonwealth, accept no liability and give no undertakings, guarantees or warranties concerning the accuracy, completeness or fitness for purpose of the information provided.



Location Diagram

