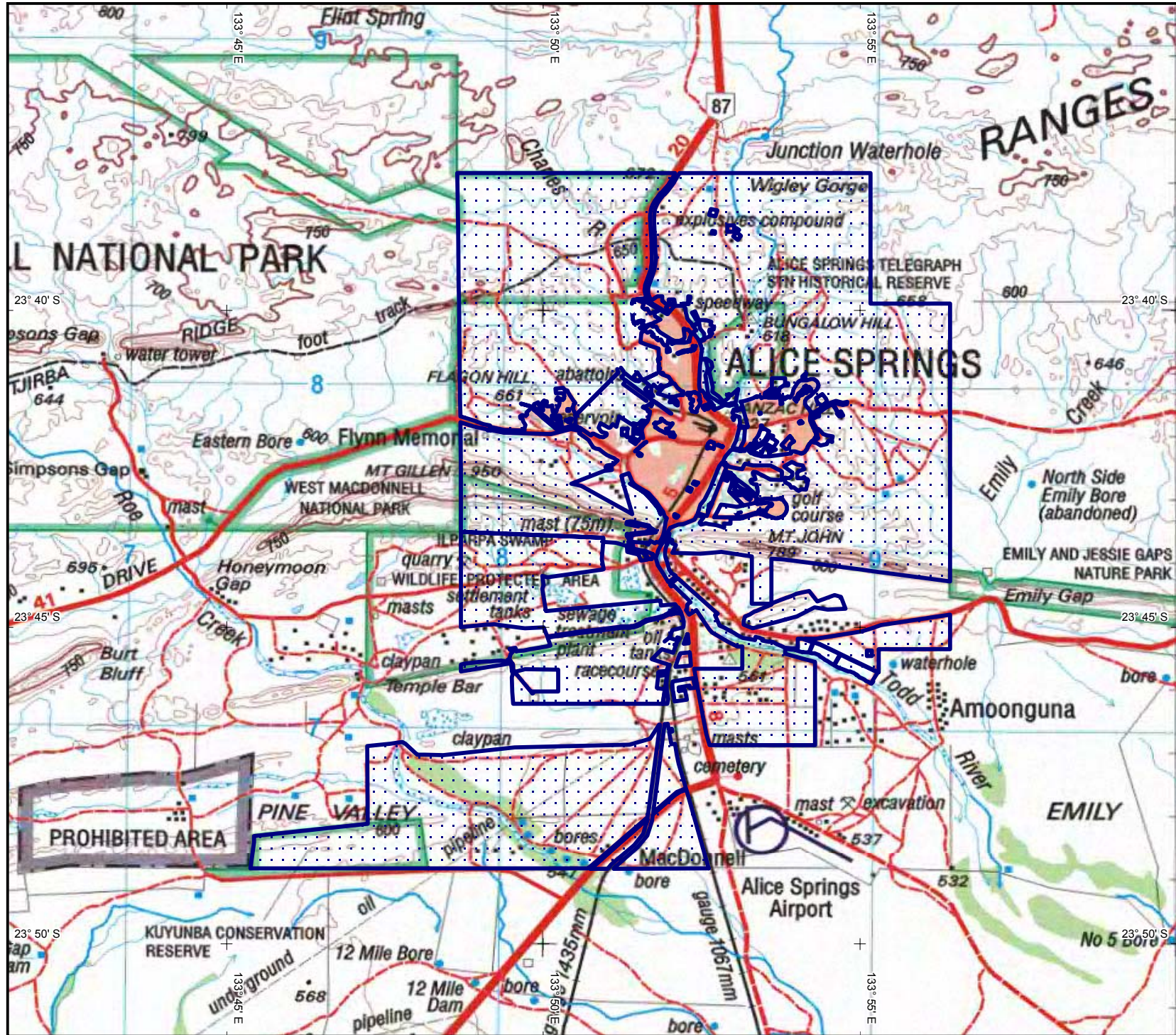


# Determination of Native Title: Alice Springs (2000)



For more information, refer to the Tribunal web site [www.nntt.gov.au](http://www.nntt.gov.au)

Map created by: Geospatial Services, National Native Title Tribunal (02/11/2004)

Topographic image data is © Commonwealth of Australia and is used under licence from Geoscience Australia.

NOTE: Topographic images should be used as a guide only.

Determination area data sourced from & used with the permission of DIPE (NT).

P:\GEO\_INFO\Individual A4 Maps\Determination of Native Title\Workspaces\DC94\_2.WOR

## Determination area

NOTE: Areas shown represent the geographic extent of the application or those parts of an application determined. They do not necessarily differentiate where native title has been determined to exist or has been extinguished. Areas excluded from determinations are not necessarily depicted.

The Registrar, the National Native Title Tribunal and its staff and officers and the Commonwealth, accept no liability and give no undertakings, guarantees or warranties concerning the accuracy, completeness or fitness for purpose of the information provided.



Latitude and Longitude based on Geocentric Datum of Australia 1994  
Non Projection



## Location Diagram

